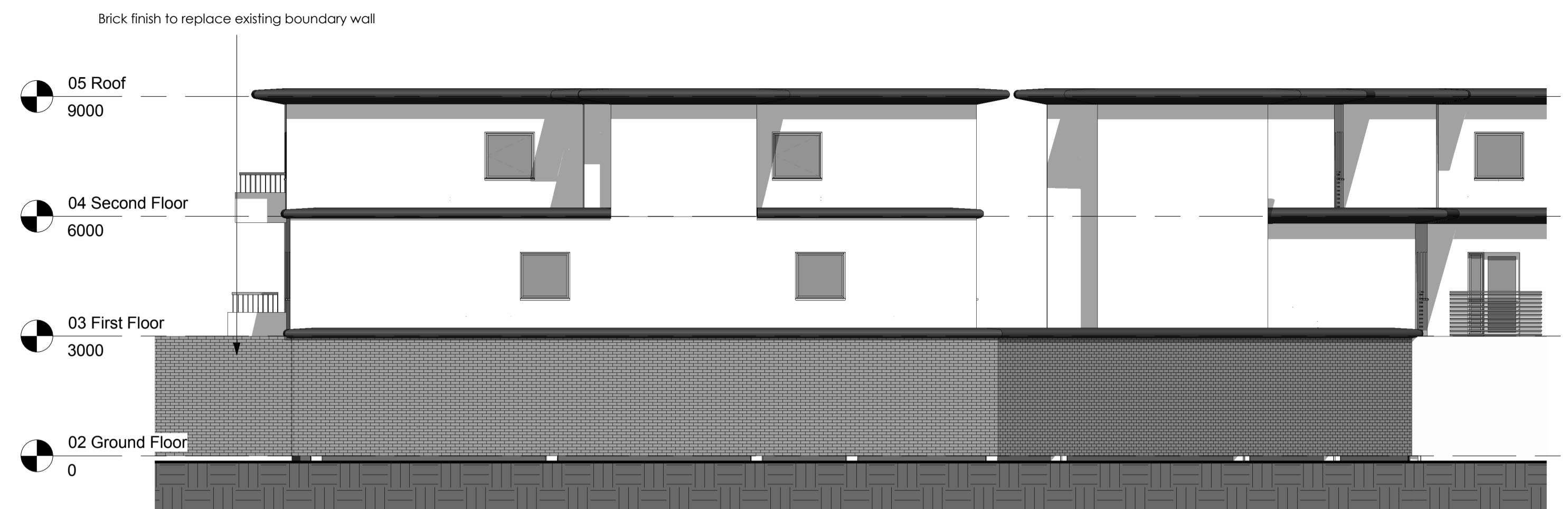
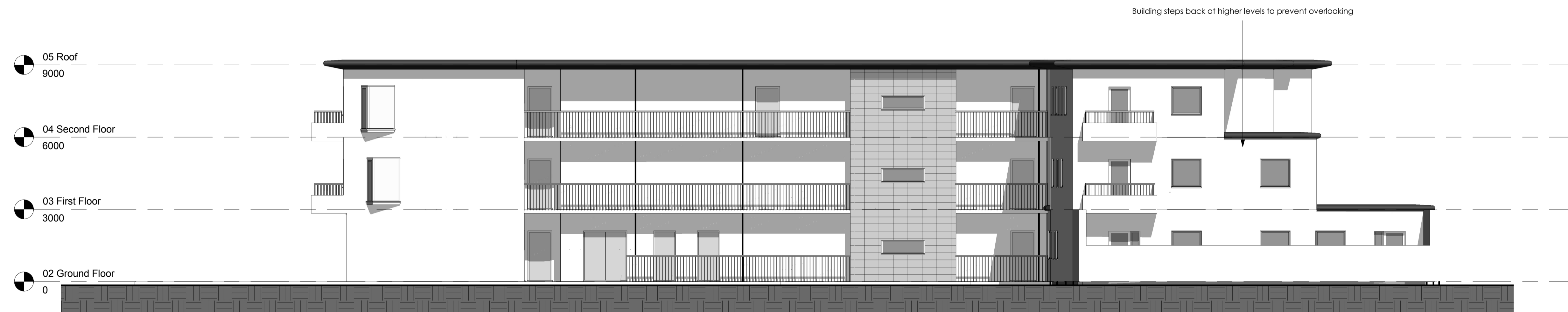


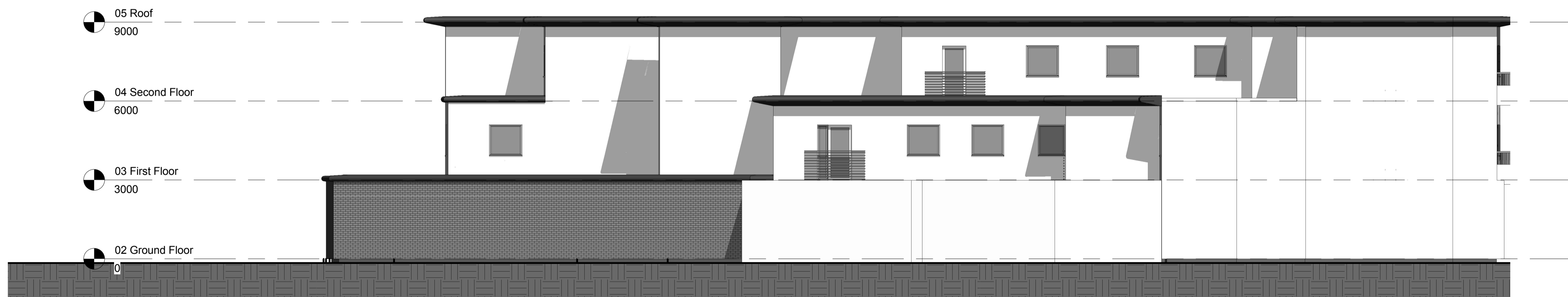
1 West
1 : 100



3 East
1 : 100



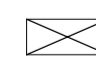




4 South
1 : 100



2 North
1 : 100

GENERAL NOTES
1. THIS DRAWING IS SUBJECT TO COPYRIGHT AND IS NOT TO BE REPRODUCED IN PART OR IN WHOLE WITHOUT APPROVAL
2. DO NOT SCALE THIS DRAWING

-  preliminary
-  information
-  approval
-  construction
-  as built

Rev A: Amendments made to following comments from Local Authority 02.05.2007 / AC



CLIENT
Keyworker Homes North West Ltd
PROJECT
Mixed-Use Development at former Belle Vue Garage site
TITLE
Proposed Elevations
11 Riversway Business Village Navigation Way Preston PR2 2YP
t.01772 723626 f.01772 725487 e. mail@fletcher-smith.net

SCALE	1 : 100
DATE	03/16/07
DRAWN BY	AC
DRAWING NUMBER	3081-150
A	