



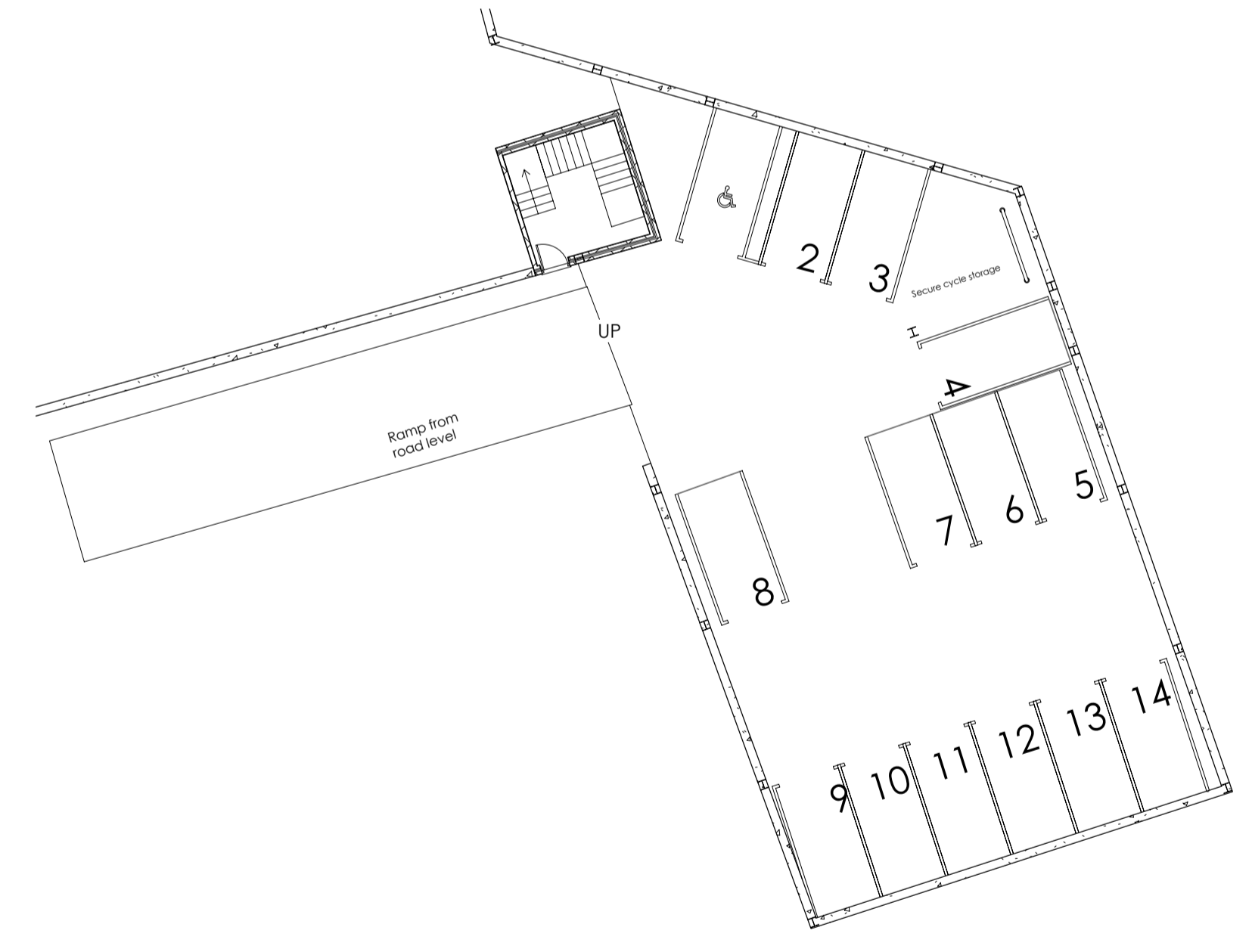
1 02 Ground Floor
1 : 200



3 04 Second Floor
1 : 200



2 03 First Floor
1 : 200



4 01 Car Park
1 : 200

GENERAL NOTES
 1. THIS DRAWING IS SUBJECT TO COPYRIGHT AND IS NOT TO BE REPRODUCED IN PART OR IN WHOLE WITHOUT APPROVAL
 2. DO NOT SCALE THIS DRAWING

- preliminary
- information
- approval
- construction
- as built

Rev A : Amendments following comments from Local Authority - 02.05.2007 / AC



CLIENT
Keyworker Homes North West Ltd
 PROJECT
Mixed-Use Development at former Belle Vue Garage site
 TITLE
Floor Plans
 11 Riversway Business Village Navigation Way Preston PR2 2YP
 t.01772 723626 f.01772 725487 e. mail@fletchersmith.net

| | |
|----------------|----------|
| SCALE | 1 : 200 |
| DATE | 05/02/07 |
| DRAWN BY | AC |
| DRAWING NUMBER | 3081- |
| A | 102 |